



THORNLIE PRIMARY SCHOOL

Thornlie Avenue, Thornlie WA 6108

TELEPHONE: (08) 9459 4333

FAX: (08) 9459 0702

e-mail address thornlie.ps@education.wa.edu.au

Website: <http://thornlieps.wa.edu.au/>

Term 1 Week 4

Wednesday 23 February 2022

Together We Grow

GROWTH, RESPECT, OPPORTUNITY, WORTH

Welcome to All

Thank you to members of our school community for your cooperation in adhering to mask wearing requirements and social distancing this term. Please remember masks must be worn on school grounds inside and outside of buildings. These measures are necessary to ensure staff, students and school community members remain safe and assist teaching and learning programs to continue.

Well done Thornlie Primary School community!

ADVICE TO PARENTS / CARERS IN THE EVENT OF SCHOOL OR CLASSROOM/S CLOSURES

The school has updated its advice regarding our response to a whole school closure or one or more classroom closures. The information can be found on the school website in the '**Response to Learning at Home**' tab (previously named Response to Covid 19) and has been developed to assist parents in the event of a closure.

* '**Plan for Continuity of Learning at Home**'

* '**TPS Response to Learning at Home**'

Copies of these plans are attached. Parents and carers may also contact the school on 9232 3450 if further assistance is required.

STUDENTS WHO ARE UNWELL

Parents / carers, please be aware that children who are unwell should not be sent to school. If a child becomes unwell while at school, parents / carers will be contacted to collect their child from school. Thank you for cooperation with this.

PARENTS / VOLUNTEERS AT SCHOOL

Following advice from the Department of Education, **parents and carers can no longer enter classrooms, including to volunteer.** Volunteering in the canteen or at the uniform shop is still permitted, however masks are to be worn at all times and physical distancing of 1.5m applies.

Parents and carers are allowed on school grounds for drop off and pick up in outdoor locations, however the wearing of masks and physical distancing (2 metres) applies. Parents are asked not to gather on the school site. Thank you for your cooperation with this.

CHANGES TO ASSEMBLY ARRANGEMENTS

Schools have been advised to minimise large gatherings on school sites. To comply with this advice, our school will only conduct classroom assemblies (in phase of learning years e.g. years 1 / 2). During these assemblies, Merit Certificates and Positive Behaviour awards will be presented to students who are hosting the assembly and during the week to students in other classrooms. At other times during the term, Merit Certificates and Positive Behaviour awards will be presented to students in their classrooms. **As parents will not be able to attend assemblies**, classroom assemblies will be videoed and uploaded to CONNECT for those parents whose children hosted the assembly. Parents will be notified when this occurs.

The next classroom assembly will be hosted by **Rooms 1, 2 and 3 and held Monday 21 March 2022.** Assemblies hosted by Student Leaders, will not be held this term.

AFTER SCHOOL CARE

During Terms 3 and 4 2021 the school community was surveyed to gain an indication of the number of parents/ carers interested in outside school hours care for their children. Following the survey in Term 4, preliminary discussions were held with an Outside School Hours Care (OSHC) provider about the prospect of opening an onsite service at Thornlie Primary School.

The Provider visited the school and advised that they were unable to conduct a viable OSHC program at this stage due to the school numbers and limited space available to conduct an OSHC program. If circumstances at the school change in the future, we will consider entering discussions again with the Outside School Hours Care provider.

FOOD ALLERGIES

A reminder that a number of our students have allergies to foods such as peanuts and tree nuts. We respectfully ask that Parents and Carers for this reason **DO NOT** send nuts or nut products to school in lunch boxes. We ask that food is **NOT** shared amongst other students. We ask that you please reinforce this message at home with your children. Thank you.

Kind Regards

Lynette Deane-Spread
Principal

Parents/Caregivers

Please remember when taking photographs and videos of school assemblies and events that they are for your personal use only and **CANNOT** be uploaded to social media sites such as Facebook or websites such as YouTube. Thank you.

SEASONS FOR GROWTH

Change and loss are issues that affect all of us at some stage in our lives. At Thornlie Primary School we recognise that when changes occur in families through death, separation, divorce or related circumstances, young people may benefit from learning how to manage these changes effectively. We are therefore offering a very successful education program called *Seasons for Growth*. This program is facilitated in small groups and is based on research that highlights the importance of social support and the need to practise new skills to cope effectively with change and loss. It focuses on developing strengths in areas such as self-esteem, managing feelings, problem-solving, decision-making, communication and building support networks. *Seasons for Growth* is not counselling. It is an education program that uses a wide range of creative activities to learn how to manage well in times of change.

Seasons for Growth has been timetabled to run for 8 weeks for approximately 45 minutes each week. The program will conclude with a *Celebration* session.

If you think your son/daughter would benefit from *Seasons for Growth* we would encourage you to talk to him/her first about this. Should he/she decide to participate, please complete the form from the office and return it to Mrs Thomas (Chaplain).

Thornlie Primary School is pleased to be able to offer this important program and we are confident that it will be a valuable learning experience.

Christine Thomas
(Chaplain and Seasons for Growth
Companion/Site Co-ordinator)



COMMUNICATION

We aim to keep our community well informed through as many channels as possible. Parents are asked to promptly inform the school when their contact phone number or email address changes, if their child's health needs change, or anything you feel may impact on your child at school.

SMS is our most direct form of communication and the channel for which we have the majority of contact details registered and up to date.

We will communicate urgent and important information via SMS with direction to further information on our school website.



**SMS TO OUR ABSENTEE SERVICE
0437 881 842**

Please assist us by sending an SMS to the number above if your Child is absent from School for any reason.

VOLUNTARY CONTRIBUTIONS

Thank you to parents and carers who have already paid their Voluntary Contributions for 2022. Voluntary Contributions are an important source of funding for Thornlie Primary School. Our Voluntary Contributions are set at \$60 per child which represents enormous value for a year of high quality education.

Contributions collected from parents are used to provide materials and resources directly consumed by students. The contributions are voluntary, but directly contribute to improving the education program we can offer your child.

Please refer to the attached flyer that will give you step by step instructions on how to download QKR and register your child/ren so you are ready to make payments. Alternatively monies can still be received via EFTPOS or Direct Deposit into the schools bank account.

Pay your Voluntary Contributions this Term and be in the draw to win a Hoyts Family movie pass. As a further incentive to try QKR when paying your fees we are adding a \$20 voucher to spend at the Hoyts Candy Bar if the winner has used QKR.



Monday and Thursday Morning

On the Menu: Cheese toasties, Eggs in toast, Pancakes, Baked Beans, Spaghetti, Cereal, Milk, Milo, toast with various spreads. (Yoghurt, fruit and banana bread occasionally)



OPENING SOON

The CANTEEN will open soon for
Thursday morning Recess sales only.

Congratulations to the following students who received Awards recently.

EC2	Elisa H, Olivia W	★
EC3	Natalie D, Greyson F	
Rm 1	William T, Noraiz A	★
Rm 2	Jacob W, Zichen T	
Rm 3	Dylan K, Indianna O, Alice L, Amir L	
Rm 4	Sierra C, Jaxson K	
Rm 5	Sameeha M	
Rm 6	Leroy F	
Rm 13	Saharan N	
Rm 14	Sucaad A, Matthew B	
Rm 15	Jamaal S	
Rm 16	Matiah B	
Rm 18	Jefile M, Hamida M	



**Congratulations to Henry
Room 12**

Henry Li is a worthy recipient of the Aussie of the Month award.

He is a new student at the IEC in room 12. He has started the year by being attentive and always following Mrs DeRozario's instructions. He always lines up beautifully and others look to him as a role model. Henry is also a friendly person. He is interested in his learning. He reads with enthusiasm and has begun to write some information about himself. He can write about the home language he speaks, what country he was born in and what his favourite food is.

Henry continues to improve his English skills. He has made a fantastic start to the year. Mrs De Rozario would like Henry to keep up the good work.

TERM DATES FOR STUDENTS 2022

TERM 1

Monday 31 January 2022—Friday 8 April 2022
School Development Days are Thursday 27 January and Friday 28 January

This is a 10 week Term with Labour Day Public Holiday on Monday 7 March

TERM 2

Tuesday 26 April 2022 —Friday 1 July 2022
School Development Day Monday 9 May
(Students do not attend on this day)
This is a 10 week Term with ANZAC Day Public Holiday on Monday 25 April 2022 and WA Day Public Holiday on Monday 6 June 2022

TERM 3

Tuesday 18 July 2022—Friday 23 September 2022
School Development Day Friday 22 July
(Students do not attend on this day)
This is a 10 week Term

TERM 4

Monday 10 October 2022—Thursday 15 December 2022
School Development Day Friday 14 October
(Students do not attend on this day)
This is a 10 week Term

SCHOOL WEBSITE

All information for parents is posted on our website including fortnightly Newsletters, Term Planners, Enrolment Forms and information about upcoming events.

Our school website is very user friendly, you can find us at thornlieps.wa.edu.au



IN-TERM VACATION ABSENCES

The Department of Education does not support students going on vacation during the school term. In line with Department of Education guidelines parents are required to seek Principal authorisation at least two weeks prior to holiday departure. Please visit the front office to complete a form.

BULLYING. NO WAY!

TAKE A STAND
TOGETHER

Is it bullying?

When someone says or does something hurtful and they do it once, that's **rude**.

When someone says or does something hurtful on purpose and they do it once, that's **mean**.

When someone says or does something to hurt you and they keep doing it even when you tell them to **stop** or show them you're upset –

that's bullying

It's ok to ask for help if you are being bullied or see it happening to someone else.

You can tell a trusted adult and, or your friend.

THORNIE PRIMARY SCHOOL
IS NOW TARGETING

RESPECT



Thornlie
Primary School

Respect yourself - Respect Others -
Respect the Environment



Thornlie Primary School is a
BUZ school!

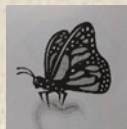


Rooms 14, 15 and 16 are learning about personal and group power through *BUZ Power* this term. Each week there will be a metaphor about power...

**The Power to
Stand up for**



**The Power to
Personal Happiness.**



Have fun
together.

Smile and
be kind.



Top Friendship Tips

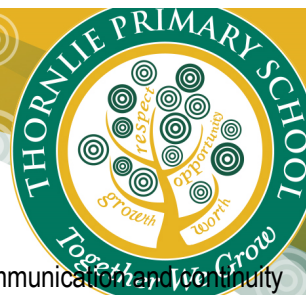
The Thornlie Primary School Chaplain is available in the Community Room for a confidential 'chat' with students, families and staff from the school community on Mondays, Tuesdays and Fridays. Appointments can be made through the school office on 9232 3450, or just drop in to the Community Room.

Christine Thomas
School Chaplain



THORNLIE PRIMARY SCHOOL

PLAN FOR CONTINUITY OF LEARNING AT HOME



In the event of a partial or whole school closure, the following plan outlines the sequence of events for communication and continuity of learning that Thornlie Primary School will implement to continue the core school business of teaching and learning in a face to face setting, and/or students commence Learning at Home (Remote Learning).

PARTIAL OR WHOLE SCHOOL CLOSURE

Notification of whole school closure or partial closure

Principal notifies school community, via SMS, Connect of type of closure and who will be affected.

Partial school closure: Some staff on school site continue teaching programs as normal

Staff offsite: students commence **Learning at Home** (Remote Learning),

Whole school closure: school closed, no staff / students on site: commence **Learning at Home** (Remote Learning).



Students access online learning resources (ongoing): e.g. Reading Eggs, Mathletics.

Teachers will monitor student's Mathletics and Reading Eggs activity and set individual student tasks.

Lesson resources on Connect (classroom)

Resources on Thornlie PS website: www.thornlieps.wa.edu.au '**Learning at Home**' tab,

Resources on the Dept. of Education WA website: <https://www.education.wa.edu.au/learning-at-home>
'**Learning at home**' tab.



Principal will update the school community as information is provided by the Department of Education

Updated information can be accessed on the

Thornlie PS website: www.thornlieps.wa.edu.au

'**Response to Learning at Home**' tab.



Students isolating at home: by day 5, teachers will have contacted students twice via parent / carer contact telephone / email.

In the event, partial or whole school closure continues past Day 5, teachers will continue to contact students at least twice in a 5-day period.



Learning Packages


On Day 4 - 5 parent / carers informed via SMS, email and on TPS School Website

if or when learning packages will be posted (if staff are onsite at the school).

In the event of a whole school closure learning packages will not be able to be mailed home.

The school admin can be contacted during school hours via email: Thornlie.ps@education.wa.edu.au
and during a partial school closure on 9232 3450.

Please notify the school if you have not received any communication from the school within two days of a whole school closure commencing.

THORNIE PRIMARY SCHOOL'S RESPONSE TO LEARNING AT HOME PLAN			
WHOLE SCHOOL CLOSURE		ONE OR MORE CLASSROOMS REQUIRED TO ISOLATE	SMALL GROUPS REQUIRED TO ISOLATE
 <p>Parents/ carers: Please also refer to Thornlie Primary School's Plan for Continuity of Learning</p> <p>Please contact lesley.rei@education.wa.edu.au or cheryl.donaldson@education.wa.edu.au or Stacey.Shepherd@education.wa.edu.au (IEC students) if you are unable to find this information and we can email you another copy. Alternatively, you can contact your classroom teacher through Connect.</p> <p>If you have difficulty accessing Connect from home, please notify the classroom teacher through email.</p> <p>To get your child started with learning whilst the issue is looked at, we have included a few resources below;</p> <p>Learning from home - Department of Education</p> <p>Resources for Kindergarten students</p> <p>Resources for Pre-primary students</p> <p>Resources for Year 1 students</p> <p>Resources for Year 2 students</p> <p>Resources for Year 3 students</p> <p>Resources for Year 4 students</p> <p>Resources for Year 5 students</p> <p>Resources for Year 6 students</p>	<p>Scenario 1: TEACHER IS ISOLATING AND WORKING FROM HOME (ASYMPTOMATIC)</p> <ul style="list-style-type: none"> If the teacher is isolating and working from home, the whole class will participate in online learning using Connect and the TPS Website Your child has been accessing Connect at school and will know how to login to Connect. Your teacher will make contact through Connect on day 1 to provide you with a timetable to start online learning. <p>Scenario 2: TEACHER IS ISOLATING AND IS <u>NOT</u> WELL ENOUGH TO TEACH (SYMPTOMATIC)</p> <ul style="list-style-type: none"> If the teacher is isolating and is not well, a relief teacher will be employed and the whole class will participate in online learning using Connect. Your child has been accessing Connect at school and will know how to login to Connect. The relief teacher will make contact through Connect on day 1 to provide you with a timetable to start remote learning. <p>Scenario 3: TEACHER IS ISOLATING AND <u>NOT</u> WELL ENOUGH TO TEACH (SYMPTOMATIC)</p> <ul style="list-style-type: none"> If the teacher is isolating and not well, a relief teacher will be employed to teach the students who remain in the classroom and/or students who are learning from home. The relief teacher will liaise with the Administration Team to ensure online learning is available through Connect. 		
	Online Learning Plan Scenarios for Teaching and Learning	<p>Scenario 1: TEACHER IS ISOLATING AND WORKING FROM HOME (ASYMPTOMATIC)</p> <ul style="list-style-type: none"> If the teacher is isolating and working from home and is well enough to teach, the teacher will focus on teaching those students who are also isolating at home and well enough to participate. Your teacher will make contact through Connect on day 1 to provide you with a timetable to start online learning. A relief teacher will be employed to teach face-to-face the students who remain in the classroom. <p>Scenario 2: TEACHER IS ISOLATING AND WORKING FROM HOME (ASYMPTOMATIC)</p> <ul style="list-style-type: none"> If the teacher is isolating and working from home and is well enough to teach, the teacher will focus on teaching those students who are also isolating at home and well enough to participate. Your teacher will make contact through Connect on day 1 to provide you with a timetable to start online learning. A relief teacher will be employed to teach face-to-face the students who remain in the classroom. <p>Scenario 3: TEACHER IS ISOLATING AND <u>NOT</u> WELL ENOUGH TO TEACH (SYMPTOMATIC)</p> <ul style="list-style-type: none"> If the teacher is isolating and not well, a relief teacher will be employed to teach the students who remain in the classroom and/or students who are learning from home. The relief teacher will liaise with the Administration Team to ensure online learning is available through Connect. 	
	Hard copy learning package	Families who don't have access to online learning are to arrange for their child/rens learning package/s to be picked up from a designated point at the school or the learning packages can be mailed home.	Families who don't have access to online learning are to arrange for their child/rens learning package/s to be picked up from a designated point at the school or the learning packages can be mailed home.
	My child is isolating but is unwell/has a positive COVID test	When students are unwell they are not expected to complete online learning. Please contact the classroom teacher through Connect/email, or phone the school on 9232 3450 by 9am to have your child marked as unwell under the correct Attendance Code. We will mark them as unwell for the entire 7-day isolation period. However, when they are well enough to resume online learning please contact the school to change their Attendance Code.	When students are unwell they are not expected to complete online learning. Please contact the classroom teacher through Connect/email, or phone the school on 9232 3450 by 9am to have your child marked as unwell under the correct Attendance Code. We will mark them as unwell for the entire 7-day isolation period. However, when they are well enough to resume online learning please contact the school to change their Attendance Code.
	My child is isolating but is of good health and can participate in school work	Contact the teacher through Connect/phone the school on 9232 3450 by 9am on Day 1 to have your child marked as participating in online learning. If symptoms develop, and your child can not participate, please inform the school immediately so we can change their Attendance Code.	Contact the teacher through Connect/phone the school on 9232 3450 by 9am on Day 1 to have your child marked as participating in online learning. If symptoms develop, and your child can not participate, please inform the school immediately so we can change their Attendance Code.
	What materials will the school supply if my child is learning from home?	When students are unwell they are not expected to complete online learning. If we do not hear from you, you may receive an SMS absentee message.	When students are unwell they are not expected to complete online learning. If we do not hear from you, you may receive an SMS absentee message.
	What materials will the school supply if my child is learning from home?	All teachers will use Connect or the TPS website to deliver online lessons. Teachers may ask students to submit work online through Connect. They will provide further information on this.	All teachers will use Connect or the TPS website to deliver online lessons. Teachers may ask students to submit work online through Connect. They will provide further information on this.
	What materials will the school supply if my child is learning from home?	The classroom teacher will be in touch with the online learning plan for their individual classrooms. Parents will be notified when learning packages will be posted or can be collected from a designated area in the school.	The classroom teacher will be in touch with the online learning plan for their individual classrooms. Parents will be notified when learning packages will be posted or can be collected from a designated area in the school.
	IEC STUDENTS	IEC students Home Reading Folder contains their log in for Mathematics, Reading Eggs and an exercise book that students can complete their learning in, if the school closes or their classroom closes.	

What's Happening in EC2



Recently, the students in EC2 went outside to blow bubbles.

Some children blew great big bubbles and some children blew small bubbles. Some bubbles flew high up into the sky and some bubbles popped on the grass. Everyone had a great time!

Later, when the students went back into class, they drew a picture about their experience and wrote a recount.

/

THORNIE PRIMARY SCHOOL
 Thornlie Avenue, Thornlie WA 6108
 Ph: 08 9232 3450
 ABN 13 192 558 154
UNIFORM PRICE LIST / ORDER FORM 2022



STUDENT NAME: _____ ROOM NO _____

PARENT NAME: _____ PARENT SIGNATURE _____

ITEM	SIZE	NO.	TOTAL	ITEM	SIZE	NO.	TOTAL	ITEM	SIZE	NO.	TOTAL
Polo Shirt Green & Gold with School Logo Size 4 – 14 \$25.00 *Larger Size \$28				Microfibre Trackpants Bottle Green Size 4-12 \$28.00 *Larger Size \$32				Zip Jacket Bottle Green with Logo Sizes 4-12 \$32.00 *Larger Size \$38			
Unisex Microfibre Shorts Bottle Green & Gold Sizes 4 -12 \$18.00 *Larger Size \$20				Girls Skort Bottle Green Size 4 – 12 \$25.00 *Larger Size \$28				Bucket Hat \$8 XS, S, M, L Wide Brim Hat \$8 Bottle Green S, M, L, XL			
								White Instant Hijab One size fits all \$10			
								TOTAL OF ORDER			

*Size 2/3 Pants, shorts & ~~skirts~~ are available by PRE-ORDER only

*Size 16 and larger available by PRE-ORDER for all items

The Uniform Shop is run by P&C volunteers.

Opening Hours: Monday 8.45am – 9.30am

Orders can be posted at the front office and the P&C will complete the order and return to the child's classroom within 3 days.

Payment Options: **CASH ONLY**

****Please note: Pre-orders take a minimum of 10 business days to arrive****

Uniforms can also be purchased without the school logo at the following stores:

Best & Less, K Mart & Target

Girls uniform

Zip Jacket



Green Polo Shirt
(Not available through school)



New School Polo Shirt



Bucket hat



Skirt



~~Skort~~



Jazz Pants



Track pants



White Hijab



Boys Uniform

Zip Jacket



Track
Pants



New School Polo Shirt



Bucket Hat



Shorts



Green Polo
(Not available through school)





THORNLIE PRIMARY SCHOOL

Term 1 Parent Calendar 2022

T1	Monday	Tuesday	Wednesday	Thursday	Friday
1	31 Jan Early Close 2.30pm	1 Feb	2 Feb	3 Feb	4 Feb
2	7 Feb Early Close 2.30pm	8 Feb Playgroup 8.40-10.40	9 Feb Newsletter	10 Feb	11 Feb
3	14 Feb Early Close 2.30pm	15 Feb Playgroup 8.40-10.40	16 Feb P&C Meeting 3.15pm	17 Feb	18 Feb
SWIMMING LESSONS IEC					
4	21 Feb Early Close 2.30pm	22 Feb Playgroup 8.40-10.40 School Board Meeting 8.45am	23 Feb Newsletter	24 Feb	25 Feb
SWIMMING LESSONS IEC					
5	28 Feb Early Close 2.30pm	1 Mar Playgroup 8.40-10.40	2 Mar	3 Mar	4 Mar
6	7 Mar Labour Day Public Holiday	8 Mar Playgroup 8.40-10.40	9 Mar Newsletter	10 Mar	11 Mar
7	14 Mar Early Close 2.30pm	15 Mar Playgroup 8.40-10.40	16 Mar	17 Mar	18 Mar
8	21 Mar Early Close 2.30pm Assembly: Room's 1, 2 & 3	22 Mar Playgroup 8.40-10.40	23 Mar Newsletter	24 Mar	25 Mar
9	28 Mar Early Close 2.30pm	29 Mar Playgroup 8.40-10.40	30 Mar P&C Meeting 3.15pm	31 Mar	1 Apr
SWIMMING LESSONS MAINSTREAM					
10	4 Apr Early Close 2.30pm	5 Apr Playgroup 8.40-10.40 School Board Meeting 8.45am	6 Apr Newsletter	7 Apr	8 Apr
SWIMMING LESSONS MAINSTREAM					

**** Term 2 commences Tuesday 26 April 2022****

Our school provides access to Department of Education online services. Approval is given to access online services at the time of enrolment.

To assess students reading at Thornlie Primary School teachers will be using Cengage PM Benchmarking online as per table below. If you have any concerns please contact the school on 9232 3450.

Name	Category	Information provided:	Terms of Use / Privacy Policy
Cengage, PMeCollection and NelsonNet https://cengage.com.au/primary/browse-series/pm/pmecollection	Teaching and Learning	Staff/teacher: name, email Student: name, date of birth, gender, biometric data, other data Other data: school How the information is used: Guided and independent reading platform Where the information is stored: Within Australia	https://cengage.com.au/privacycentre https://cengage.com.au/corporate-home/help/using-this-site/terms-and-conditions



PLAYGROUP

Playgroup is unable to meet on the school grounds due to Covid restrictions.

In the meantime you are most welcome to join us at Bainton Road Playground corner of Bainton Road and Thornlie Avenue Thornlie at 8.40am to 10.40am.

For more information regarding playgroup please phone Renee at Playgroup WA on 9228 8088

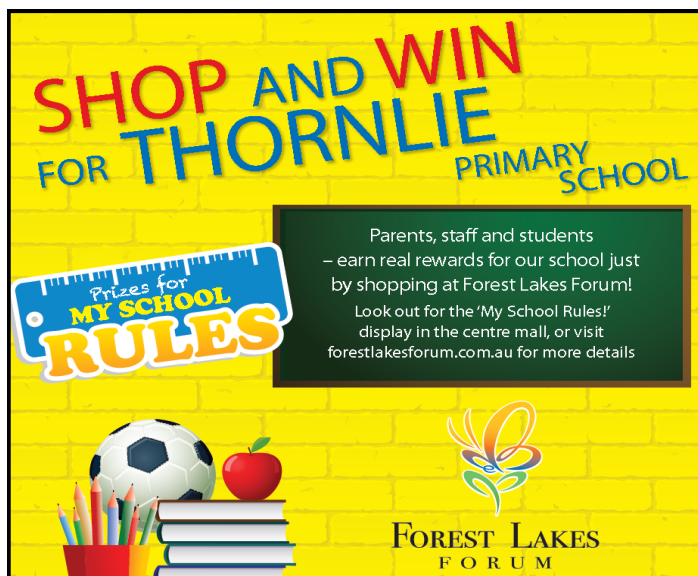
SWIMMING LESSONS

REMINDER

Swimming Lessons for mainstream students commence in Week 9 Monday 28 March and conclude on Friday 8 April at a cost of \$31.50 each.

Permission notes will be going home with students in Pre Primary to Year 6 shortly.

Please return forms with payment at your earliest convenience.



Thank you to our Parents, Carers and Community Members for supporting our school in this competition.

Look out for the “My School Rules” display in the centre mall at Forest Lakes Forum to post your shopping docketts.

Keep supporting our school for our chance to secure top prize of \$1000.00

School Watch encourages the school community to report any suspicious activity in an around school grounds, after hours and on weekends, as well as during school holidays. Telephone 1800 177 777 (freecall) or 13 14 44 (WA Police)



LOOKING TO PLAY FOOTBALL IN 2022?
 LYNWOOD UNITED ARE LOOKING FOR
 PLAYERS FOR OUR UNDER 12s, UNDER
 14s AND UNDER 16s GIRLS TEAMS



www.instagram.com/lynwoodunited



www.facebook.com/lynwoodunited



www.lynwoodunitedfc.com

Call or Email Julie Toohey
 Girls Team Coordinator

for more information
julietoohey@gmail.com

0405 941 386



TRY NEW ADVENTURES AT GIRL GUIDES

The Thornlie Friendship Girl Guide Unit meeting in Thornlie is seeking girls aged 6 - 10 years who want to try new things, make friends and enjoy nature!

The Unit has planned an action-packed term that includes Art and Craft, Outdoor Activities, Cooking and loads more.

Girl Guides take an active role in planning their own program of activities. In Australia, our mission is to empower girls to grow into confident, self-respecting, responsible community members. This means learning through fun, teamwork and community service.

Those parents interested in a two-week trial for their daughters should contact 9479 9800 or membersupport@girlguideswa.org.au, or complete the form at www.girlguideswa.org.au.



We're accepting new girl guides!

tinyurl.com/JoinGirlGuides

Girl Guides Western Australia

265 Great Eastern Hwy
 Belmont WA 6104
 PO Box 780, Victoria Park WA 6979

Phone: +61 8 9479 9800
info@girlguideswa.org.au
www.girlguideswa.org.au



For quicker, hassle-free school payments, try Qkr! today

Introducing Qkr! (pronounced 'quicker') by Mastercard, the secure and easy way to order and pay for school items from your phone at a time and place that suits you.

With Qkr you can:

- Pay for a variety of school items;
- See your receipts on the app and get them sent by email if required.



Getting started is easy - try it yourself today

Step 1 Download Qkr!

on your Android phone or iPhone. iPad users can download iPhone app



Step 2 Register

Select your Country of Residence as 'Australia' and follow the steps to register

Step 3 Find our school

Our school will appear in 'Nearby Locations' if you're within 10kms of the school, or search for our school by name.

Step 4 Register your children

When first accessing our school you will be prompted to add a student profile for your child. This allows you to make orders and payments for them.

Search for our school name



If you have made a purchase you can select our school from 'Previous Location'

If you're within 10 kms of the school, you can select our school from 'Nearby Locations'

Add your children's details in Student Profiles

Select 'Add student profile'

Add each child's details

Manage each child's details in Student Profiles



Purchase school items

Select a menu from our school

Select child you are ordering for

Select your items Tap 'Checkout' then confirm and pay



Making payments

Add up to 5 cards to your wallet

At checkout select which card to pay with.

Pay with any cards accepted by the school.

Once your payment is approved you can continue to the home page, or view your receipt.





Got a COVID-19 symptom? Get tested.

Anyone with symptoms, even if
mild, should get tested.



fever



cough



sore throat



difficulty breathing



runny nose



loss of taste or smell

Testing at public COVID clinics is free.

Safe return to school plan

School is open for learning.

The Department of Education is following current public health advice to reduce the transmission of COVID-19 in our schools and our communities. We are committed to delivering quality teaching to children in Western Australia.

Learning



Face to face teaching

Staff



Required to be triple
dose vaccinated

Visitors



Show proof of vaccination
when required

COVID-19 safe schools



Masks supplies for
staff and students



Pool of vaccinated
school staff available



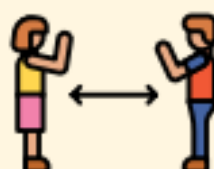
Adequate ventilation
for all classrooms



Air purifiers supplied
where required



Stay home
when sick



Avoid unnecessary
physical contact



Additional
cleaning



Hand sanitiser
supplies

If you require further information or assistance, please speak to your principal or a staff member at your school. You can also contact your regional office. For COVID-19 queries, please contact coronavirussupport@education.wa.edu.au or call 1800 882 345.

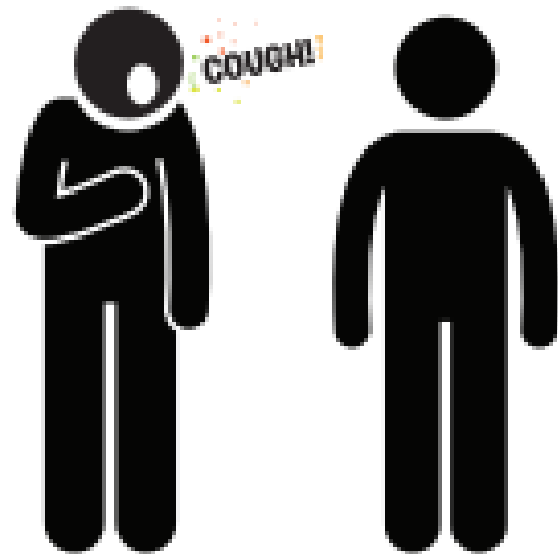
[education.wa.edu.au](https://www.education.wa.edu.au)

*to comply with public health directions

Coronavirus (COVID-19)

Coronavirus is spread from person to person.

It is spread by people coughing/
sneezing on someone else.



If someone sneezes or
coughs onto a surface...

...Coronavirus can live
on that surface until
that surface is cleaned.

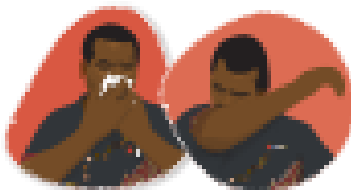


If someone touches
that surface...

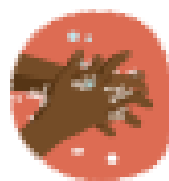


...and then touches their face,
then they can get Coronavirus.

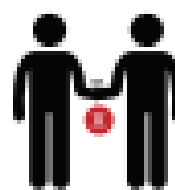
For these reasons we need to be very careful about the way we live.



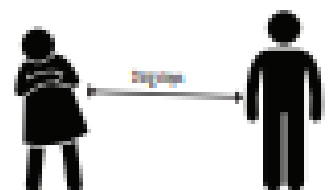
We need to always cover
our cough and sneeze.



Wash hands regularly and
avoid touching the face



We must keep our distance from other people, so no
shaking hands and keep at least 2 big steps away.





Department of
Education

Shaping the future

Hello.

COVID-19 school visitor information



**Leave your children at the door
with us – we will take care of
them from here.
Thank you.**

Based on current public health advice as at 7 February 2022.