



THORNIE PRIMARY SCHOOL

Thornlie Avenue, Thornlie WA 6108

TELEPHONE: (08) 9459 4333

FAX: (08) 9459 0702

e-mail address thornlie.ps@education.wa.edu.au

Website: <http://thornlieps.wa.edu.au/>

Term 1 Week 2

Wednesday 07 February 2018

Together We Grow

GROWTH, RESPECT, OPPORTUNITY, WORTH

Welcome to All

Dear Parents/Guardians

Welcome back to students, parents and staff for the 2018 school year. I trust that you enjoyed a restful break over Christmas and New Year and have returned ready for a solid year of learning at Thornlie. This term as students settle into their new classes and routines I would ask parents that they ensure their children attend school every single day of the week unless they are unwell. Every day at school is extremely important and we trust that you will support us strongly in getting your children to school on time every day.

WELCOME BACK FAMILY PICNIC

All families are welcome to bring along a picnic to share with their children on Friday February 23rd from 1.00pm – 1.40pm. Parents or carers are invited to bring along food and drinks, a picnic rug or chairs to sit on. We request that Kindy and Pre-Primary students remain inside their fenced area however older siblings are welcome to join them with a parent or carer. *We kindly ask that items containing nuts are not brought along.*

NEW EARLY YEARS PLAYGROUND

The garrison fencing for the Kindy/Pre-Primary playground is almost complete and work will commence shortly on the new playground upgrade for this area. I will keep you posted as the scope of works and timeframe become available from the contractor. *NB: The planned main school courtyard upgrade will then be given further consideration after the completion of the early years playground.*

NEW OPPORTUNITY TO BECOME AN INDEPENDENT PUBLIC SCHOOL IN 2019

The Minister for Education and Training announced in Parliament in late last year a new opportunity for schools to become Independent Public Schools for 2019.

The process to become an Independent Public School is a positive and invigorating opportunity involving your school council and school community.

The development and selection process will be as rigorous as in previous years to ensure that selected schools are well placed to maximise the benefits of greater autonomy. The 2018 development program will focus on connections between autonomy, innovation and student success.

Schools were invited to express interest by 4.00pm on Thursday 14 December, 2017. I have sent in an expression of interest for this program and the School Council can then determine if they wish to pursue this opportunity.

A briefing day will be held in Term 1 on February 28th this year outlining the development program and selection process which will run in Terms 2 and 3. Selected schools will then participate in a transition program in Term 4 in readiness to start the 2019 school year as Independent Public Schools.

STUDENT COUNCILLORS & FACTION CAPTAINS 2018

Congratulations and welcome to our newly appointed Faction Captains and School Councillors for 2018. I am looking forward to working with these students over the course of the year.



*Student Councillors L-R Nu Tial Sung, Mekhathara, K"pru Nay, Maksymilian, Harbal, Negash,
Front: June Ne Lian, Tha Mee La*

Parents/Caregivers

Please remember when taking photographs and videos of school assemblies and events that they are for your personal use only and CANNOT be uploaded to social media sites such as Facebook or websites such as YouTube. Thank you.



<u>Faction Captains</u>
Churchdown
Culross
Camberley
Harrison and Maimuna,
Caleb and Emircan,
Eivanne and Tarquin

FOOD ALLERGIES

A number of our students have allergies to foods such as peanuts and tree nuts. We would respectfully ask that parents and carers for this reason DO NOT send nuts or nut products to school in lunch boxes. For this reason we also ask that food is NOT shared amongst other students. Please reinforce this message at home. Thank you.

ATTENDANCE & BEHAVIOUR

Our aim at Thornlie Primary School is to reward the vast majority of students who consistently do the 'right thing'. This year we will continue our whole school behaviour and reward system at our school. Children with an attendance rate of 80% or greater who have not received 3 red behaviour slips or a suspension during a term will be eligible for whole school behaviour and attendance rewards.

I am re-explaining this process again in the first few newsletters so that all parents and carers understand the behaviour and attendance reward system at our school. We take attendance and behaviour very seriously at Thornlie because it has a large impact on the teaching and learning program. I look forward to strong support again this year from parents, staff and students.

STUDENT PROGRESS

During Term 1 classroom teachers may request a meeting to discuss your child's academic program and needs for the year. I would also remind all parents/carers that they can contact the school at any time to request a meeting with their child's teacher should they have a query or concern.

TERM CALENDAR

Please find attached a copy of the Term 1 calendar with this newsletter. I would encourage you to keep a copy on the fridge at home to remind you of upcoming events.

EARLY CLOSE MONDAY'S

A reminder that our school closes at 2.30pm every Monday and at 3pm on all other school days.

NEXT SCHOOL ASSEMBLY

School Assemblies will be on Tuesday's again this year. **Our next whole school assembly will be held on Tuesday 20th February in the new covered assembly area and hosted by Rooms 1 & 3.** Parents and Carers are most welcome to attend.

BREAKFAST CLUB

Breakfast club is available every Monday & Thursday in our covered assembly area. Volunteers are most welcome. **Breakfast club commences on Thursday February 8th this year.**

AFTER SCHOOL SUPERVISION

A reminder to parents and carers that at the end of the school day we require all students to make their way home in a timely manner and **ask that students do not stay to play on school grounds or equipment.** School staff have meetings and commitments after hours and supervision of students in the playground is not provided. All students need to be collected by a responsible adult or make their way home straight after the siren has sounded. Your assistance in regard to this matter is very much appreciated.


STUDENT PICK UP & DROP OFF

A reminder that students should not be at school any earlier than 8.30am in the morning and all students need to be picked up by 3.15pm or 2.45 on Mondays. Thank you again for your support in regard to this.

NEW SCHOOL COUNCIL MEMBERS

We are seeking new parent or community representatives for the School Council for 2018. Please see nomination forms and details attached.

Lee Woodcock,
Principal

	
08 Feb	Breakfast Club Commences
20 Feb	Assembly Rooms 1 & 3
21 Feb	School Council Meeting 8.30am
23 Feb	"Welcome Back Family Picnic 1.00-1.40pm
02 Mar	P&C Subway Day
05 Mar	Labour Day Public Holiday
06 Mar	Assembly: Room 6
07 Mar	P&C AGM 3.15pm
20 Mar	Assembly: Room 8 Easter Hat Parade
30 Mar	Good Friday Public Holiday
02 Apr	Easter Monday Public Holiday
03 Apr	Easter Tuesday Public Holiday
04 Apr	Scitech Incursion
10 Apr	Assembly: Room 5
12 Apr	End of Term Reward Day
13 Apr	ANZAC Service 10.00-10.40am P&C Sausage Sizzle

UNIFORM SHOP

The Uniform Shop is open on Wednesday and Friday morning 8.30am to 9.30am.

Orders with correct money can be left in the locked P&C Box in the office at anytime. The order will then be taken to your child's classroom on the next uniform day.

Please be aware that this is a cash only business. Agency cheques will be accepted.

SCHOOL WEBSITE FOR INFORMATION AND NEWSLETTERS

All information for parents is posted on our website including fortnightly Newsletters, Term Planners, Enrolment Forms and information about upcoming events. Our school website is very user friendly, you can find us at thornlieps.wa.edu.au

TERM DATES 2018

Term 1	Wednesday 31 February—Friday 13 April
Term 2	Tuesday 1 May — Friday 29 June
Term 3	Tuesday 17 July—Friday 21 September
Term 4	Tuesday 09 October—Thursday 13 December

SCHOOL HOURS

School hours are 8.40am to 3.00pm Tuesday to Friday and 8.40am to 2.30pm on Mondays.

First Siren: 8.40am

Recess: 10.40-11.00am

Lunch: 1.00-1.40pm

Finish: 3.00pm and 2.30pm on Monday

The front office is open from 8.00am to 3.30pm

LEAVE PASS

Any students leaving School during the day need to have a "Student Leave Pass" signed by Administration. Please collect a leave pass from the front office prior to picking your child up from the classroom. This applies to all year levels from Kindergarten to Year 6



UPDATE YOUR RECORDS

Please ensure that all relevant details are correct and inform the front office of any changes.

- * If you have moved address
- * Changed your mobile or home phone
- * Your child has an allergy or medical condition
- * Any name changes
- * Legal issues the school need to know about or any other relevant issues.

It is essential that all details are kept up to date in case of an emergency and we need to contact you.

Student contact update forms and Student medical information forms for 2018 will be sent home shortly. Please complete the forms for your child and return to the front office at your earliest convenience.

BREAKFAST CLUB

We're looking for people who can spare an hour to support the Breakfast Club on Monday and/or Thursday morning. Come in at 8.00am and help with serving and then after the siren at 8.40 help wipe tables and wash dishes and be out the door and off to the rest of your day by about 9.00am. If you can help please phone Administration on 9459 4333 or see Libby in the Breakfast Club.

CHAPLAINCY

The Thornlie Primary School Chaplain is available for a confidential 'chat' with students, families and staff from the school community on Mondays, Tuesdays and Fridays. Appointments can be made through the school office on 9459 4333, or just drop in to Room 16.

Christine Thomas
School Chaplain

HELPFUL CONTACTS

Thornlie Primary School Administration	9459 4333
Thornlie Pre Primary/ Kindy	9459 4910
Thornlie Intensive English Centre	9459 4304
Thornlie Dental Clinic	9459 7540



SMS TO OUR ABSENTEE SERVICE 0437 881 842

Please assist us by sending an SMS to the number above if your child is absent from school for any reason.

CLASS PLACEMENTS 2018

MAINSTREAM CLASSES	ROOM	TEACHER	EDUCATION ASSISTANT
Kindy	Green and Yellow EC1	Ms Roxane Tognela	Mrs Sandra Mallatrat Mrs Maureen Ross
Kindy/Pre Primary	EC3	Mrs Marj Booth(M, Tu, Thu, Fri) Mrs Val Dujmovic (Wed)	Mrs Linda Mayers Mrs Maureen Ross Ms Bianca Van Beek
Pre Primary	EC2	Mrs Shelley Clarke	Mrs Claire Cotton Ms Renae McKay
Year 1/2	Room 1	Mrs Carolyn Bailey	Mrs Maureen Ross
Year 1/2	Room 2	Mrs Heather Connan	Mrs Maureen Ross
Year 1/2	Room 3	Mrs Annette Jones	Mrs Maureen Ross
Year 3/4	Room 4	Ms Lynda Pettit (M-W) Mrs Megan Bottomley (Th-F)	
Year 3/4	Room 5	Ms Julie Petersson	Mrs Kate Lenane Ms Coby-Ann Kriwopischin
Year 4/5	Room 6	Ms Jordyn Pol	
Year 5/6	Room 7	Mrs Eugenie Bensley	Mrs Kathy Still
Year 5/6	Room 8	Mr Jason Joseph	
IEC CLASSES			
Year 1/2	Room 11	Ms Emma Mounier	Ms Florence Gale Mrs Angela Loo Mrs T'Blay Paw Ms Vera Sayegh Mrs Behnaz Sanaei Mrs Manjit Singh
Year 1	Room 12	Mrs Monica De Rozario	
Year 1/2	Room 13	Ms Carol Buchanan	
Year 3/4	Room 10	Mrs Lina Solar	
Year 3/4	Room 19	Ms Bryony Hutchinson	
Year 5/6	Room 20	Ms Helen Hopewell	
Year 5/6	Room 18	Ms Diane Ursell	
Support	Room 14	Mrs Carolyn Axtens	
Curriculum Leader & Mentor/Support Teacher/Admin Support		Ms Jacqui Rodrigues	
SPECIALIST TEACHERS			
Phys Ed	Mr Ian Logan		
IEC Music	Mrs Marianne Boyer		
LOTE	Ms Flavia Bibby		
Music/Drama	Dr Theresa Nazareth		
Science	Mrs Arti Chaudhary		



THORNLIE PRIMARY SCHOOL

Nomination of a candidate for Parent or Community Representative - School Council

Parents / Carers and Community Members are now invited to nominate for membership of the School Council.

Nominations close on Friday 16 February 2018. We have 5 meetings per year that run for approximately 1 hour in Room 9 from 8.30am

School Council Meeting Dates 2018

- Term 1: 21 February 2018,
28 February 2018 Independent Schools Briefing Day (a school council member to accompany Lee to briefing day)
- Term 2: 23 May 2018, 20 June 2018
- Term 3: 15 August 2018
- Term 4: 7 November 2018

The Role of School Council includes but is not limited to:

- Establishing and reviewing from time to time, the school's objectives, priorities and general policy directions;
- The planning of financial arrangements necessary to fund those objectives, priorities and directions;
- Evaluating the school's performance in achieving them
- Formulating codes of conduct for students at the school;
- Promoting the school in the community;



Please tear off and return to the front office



THORNLIE PRIMARY SCHOOL COUNCIL NOMINATION FORM

I wish to nominate myself as a candidate for election to the School Council commencing 2018.

Full name: _____

Declaration of Candidate

I nominate myself as a candidate and if elected will accept the responsibility of being a parent / community representative.

Signature of candidate: _____ Date _____

NB: If we receive more than 4 nominations then a vote may be held.

Prohibition signs

Parking prohibitions are imposed to regulate and modify parking patterns. Their main function is to ensure that potential conflicts between vehicles and pedestrians are eliminated.



No Stopping

You must not stop on a length of road to which a No Stopping sign applies.



No Parking

You may stop in a No Parking zone for a maximum of two minutes to drop off or pick up passengers. You must stay within 3 metres of your car at all times.



Parking Signs

Parking signs with specified time limits allow drivers to park their vehicles for a certain period of time.



Bus Zone

You must not stop or park in a bus zone. Parking in a bus zone puts lives at risk.

02/16

City of Gosnells
PO Box 662
Gosnells WA 6990
9397 3000
council@gosnells.wa.gov.au
www.gosnells.wa.gov.au

Common offences around schools

On this occasion you have been deemed to be:

☒ Please be advised this is a caution for the above offence

Nature of offence	Penalty
<input type="checkbox"/> Parking contrary to signs or limitations	\$100
<input type="checkbox"/> Parking against the flow of traffic	\$100
<input type="checkbox"/> Causing obstruction	\$100
<input type="checkbox"/> Double parking	\$100
<input type="checkbox"/> Obstructing a driveway or other way of access	\$100
<input type="checkbox"/> Parking within 10 metres of an intersection	\$100
<input type="checkbox"/> Parking vehicle within 10 metres of departure side or within 20 metres of approach side of pedestrian, children's or rail crossing	\$100
<input type="checkbox"/> Stopping contrary to a 'No Stopping' sign	\$100
<input type="checkbox"/> Parking contrary to a 'No Parking' sign	\$100
<input type="checkbox"/> Stopping near bus stop	\$100
<input type="checkbox"/> Stopping on footpath, median strip or traffic island	\$100
<input type="checkbox"/> Stopping on a verge - without consent	\$100
<input type="checkbox"/> Parking or Stopping in Disabled Parking area	\$300
<input type="checkbox"/> Stopping or parking on a yellow line	\$100

Please refer to the City of Gosnells *Parking Local Law 2012* for the full list of prescribed offences.



CITY OF GOSNELLS

Safety around schools

GOVERNANCE



School parking

In an effort to provide a safer environment for everyone, the City of Gosnells Ranger Services patrol school parking mornings and afternoons throughout the school term.

It is imperative that drivers are aware of the road rules and understand signage around schools to ensure the safety of children, road users and pedestrians. Unlawful parking in school areas is a major safety hazard and parking infringements may be issued for incorrect, unlawful or dangerous parking.

At the beginning of each school year, Rangers conduct educational patrols in school areas.

During this period Rangers remind drivers of the need to park legally and safely and enforce the *Parking Local Law 2012* in a number of ways.

As part of this initiative, Rangers also work closely with the school community to promote safety around schools. Information leaflets are distributed to schools for inclusion in school newsletters, and advise parents of the parking requirements under the *Parking Local Law 2012*.

Common parking problems

- Parking in a **No Stopping** area
- Parking in a **No Parking** area
- Double parking
- Parking on a nature strip or verge without the owner's consent
- Parking so that the vehicle causes an obstruction
- Parking against the flow of traffic
- Stopping or parking on a footpath
- Stopping or parking at a bus stop

Be responsible

- Observe parking restrictions (read the signs)
- Be aware
- Use Kiss and Drive (if provided)
- Always be aware of children
- Walk or cycle to and from school
- Plan your trip so that you arrive earlier
- Stop on the school side so your child does not have to cross the road
- Use the crosswalk services at all times
- Use parent's parking bays (where provided)

What NOT to do

- Block driveways
- Park on footpaths
- Obstruct Children's Crossing
- Get frustrated
- Ignore speed limits around schools
- Ignore parking signs

If you need help or advice regarding parking contact Ranger Services during office hours on 9397 3000.

School zones

40km/hr school zones are in place around every school in the City of Gosnells. School zones operate from 7.30am to 9am and 2.30pm to 4pm.

Children warning signs and 40km/hr school zone speed signs are the responsibility of Main Roads WA.

Kiss and Drive

Kiss and Drive zones typically allow parents to pick up and drop off children adjacent to the main school entrance. Kiss your child, say goodbye, allow them out and drive away as soon as possible.

When using the designated Kiss and Drive zone around schools, never leave your car unattended.

Contact your local school to find out if a Kiss and Drive initiative is in place.

Continuous yellow line markings

You cannot stop or park anywhere along a single yellow line painted on the edge of the road. This restriction is in place 24 hours a day and attracts a \$100 penalty.

The City will use yellow lines instead of signage where placement of signs may be difficult, pose a hazard or affect the amenity of an area.



WHATS HAPPENING IN CLASS



This Term in EC1, We are learning to know about each other and developing friendships. We are learning about letter names and letter sounds by making beautiful art work.

In maths we are learning about numbers 1 to 5 by playing lots of games. We are learning lots of new songs and dancing along to the music.

We are having lots of fun, it is nice to have welcomed each and everyone of you in Kindy EC1.

Mrs Tognela, Mrs Mallatratt and Mrs Ross

**SHOP AND WIN
FOR THORNIE PRIMARY SCHOOL**

Prizes for
MY SCHOOL RULES

Parents, staff and students
– earn real rewards for our school just
by shopping at Forest Lakes Forum!
Look out for the 'My School Rules!'
display in the centre mall, or visit
forestlakesforum.com.au for more details

**FOREST LAKES
FORUM**

Again, thank you to our wonderful community for supporting us with the Forest Lakes Forum "My School Rules" competition.

Our school has won vouchers to the value of \$300.00 to spend at any specialty stores at Forest Lakes Forum.

Remember to keep supporting "My School Rules" for our chance to secure the top prize of \$1000.00

f "like" us on
Facebook

[facebook.com/Thornie Primary P&C](https://facebook.com/Thornie%20Primary%20P&C)

Check out our Facebook page for up to date info on what's happening in our school and the wider community.

Are you interested in helping to exchange Reading Books in Pre Primary every Monday for 1/2 to 1 hour?

If so we would love to hear from you. Please phone the front office on 9459 4333 if you can help.





GIFTED AND TALENTED⁷ **SECONDARY SELECTIVE** **ENTRANCE PROGRAMS**

Children with exceptional academic ability and creative talent thrive in our Gifted and Talented Programs. These unique academic, arts and languages programs provide a challenging curriculum designed to bring out the very best in your child.

Available at 18 select public secondary schools, including a fully selective academic school and an arts college, your child will learn alongside like-minded peers and will be taught by teachers with expert skills and knowledge.

If your child is going into Year 6 in 2018, applications are now open for entry into Year 7 in 2019. Limited places may also be available for children going into Years 9, 10 and 11 in 2019.

You can apply for these programs no matter where you live in Western Australia and, if selected, your child is guaranteed a place at the school.

Applications close

Sunday 11 February 2018

For more information and to apply online:

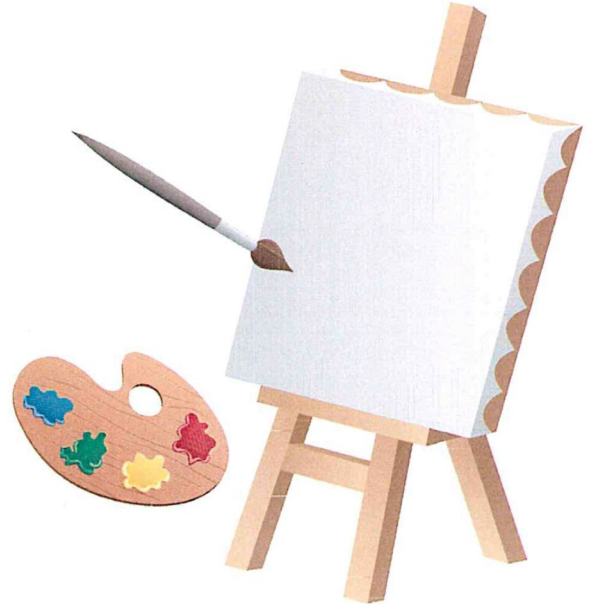
T: 9264 4307

E: gtsu@education.wa.edu.au

W: education.wa.edu.au/giftedandtalented

INFORMATION FOR PARENTS

ATTENDANCE AT PRIMARY SCHOOL



ABC

At **Thornlie Primary** we want your children to do their very best. To get the best education, they need to go to school every day.

We know that some children may need extra encouragement to go to school regularly. By working together, our school community can address some of the reasons why your child may not want to go to school.

Some common problems you may have getting your child to school:

- They won't get out of bed in the morning.
- They go to bed late at night.
- They can't find their uniform, books or school bag.
- They are slow to eat breakfast.
- They haven't done their homework or are avoiding a test or assignment.
- They are watching television or playing video games before school.

You may also be worried that your child:

- is being bullied
- may not have friends or is not fitting in
- may be feeling lost at school
- fears getting into trouble or failing
- may have learning difficulties
- may not be getting along with a teacher.

For more information please contact:

(Monika Thomas Deputy Principal.)



What can you do to help?

- Have a set time for your child to go to bed at night and get up in the morning.
- Have their uniform and school bag ready the night before.
- Have a set time for breakfast.
- Set a time for daily homework activities or after school activities.
- Talk about school positively.
- If running late, encourage your child to still go to school and reassure them that you will let the school know.
- Organise for your child to meet a friend before school so they can arrive at school together.
- Get involved at school through volunteering or participate in class book changing or helping in the early childhood classes or join the Parents and Citizens' Association.



Do you need to let the school know if your child will be away from school?

Yes, you need to let the teacher or front office staff know that your child will be absent from school and the reason why as soon as possible.

Having information about why a child is missing school helps us plan for their return to school and to work out whether we can provide any further help to you.

What will staff at **Thornlie Primary** do to help?

- Offer developmentally, socially and culturally responsive learning opportunities to engage students.
- Monitor every student's attendance and work with parents to overcome problems affecting attendance.
- Provide predictable routines to help students know what to expect to reduce anxiety about going to school.
- Talk with you about involving support staff such as school psychologist, chaplain, mentors, and other agencies or organisations to help.
- Talk with you about local services that may also be able to help.



THORNLIE PRIMARY SCHOOL

Term 1 Parent Calendar 2018

T1	Monday	Tuesday	Wednesday	Thursday	Friday
1	29 Jan School Development Day Students do not Attend	30 Jan School Development Day Students do not Attend	31 Jan	1 Feb	2 Feb
2	5 Feb Early Close 2.30pm	6 Feb Playgroup 8.40-10.40 Assembly: Councillors	7 Feb Newsletter	8 Feb Breakfast Club commences	9 Feb
3	12 Feb Early close 2.30pm	13 Feb Playgroup 8.40-10.40	14 Feb	15 Feb	16 Feb
4	19 Feb Early close 2.30pm	20 Feb Playgroup 8.40-10.40 Assembly: Rm 1 & 3	21 Feb School Council Meeting 8.30am Newsletter	22 Feb	23 Feb 'Welcome Back' Family Lunchtime Picnic 1.00-1.40pm
5	26 Feb Early close 2.30pm	27 Feb Playgroup 8.40-10.40	28 Feb	1 Mar	2 Mar P&C Subway Day
6	5 Mar Labour Day Public Holiday	6 Mar Playgroup 8.40-10.40 Assembly: Rm 6	7 Mar P&C AGM 3.15pm Newsletter	8 Mar	9 Mar
7	12 Mar Early close 2.30pm	13 Mar Playgroup 8.40-10.40	14 Mar	15 Mar	16 Mar
8	19 Mar Early Close 2.30pm	20 Mar Playgroup 8.40-10.40 Assembly: Rm 8 Easter Raffle drawn Easter Hat Parade	21 Mar Newsletter	22 Mar	23 Mar
9	26 Mar Early Close 2.30pm	27 Mar Playgroup 8.40-10.40	28 Mar	29 Mar	30 Mar Good Friday Public Holiday
10	2 Apr Easter Monday Public Holiday	3 Apr Easter Tuesday Public Holiday	4 Apr Scitech Incursion	5 Apr	6 Apr
11	9 Apr Early Close 2.30pm Last day for Breakfast Club	10 Apr Playgroup 8.40-10.40 Assembly: Rm 5	11 Apr Newsletter	12 Apr End of Term Reward Day	13 Apr ANZAC Service 10.00-10.40am P&C Sausage Sizzle

Term 2 Begins Monday 30th April 2018